

Supplementary Information for

Talbot effect in diatom-inspired structures in the THz range

Mariia V. Reshetova, Julijana Cvjetinovic, Gleb M. Katyba, Arina V. Radivon, Evgeniy O. Epifanov, Nikita V. Minaev, Kirill I. Zaytsev, Sergey A. Dyakov, and Dmitry A. Gorin

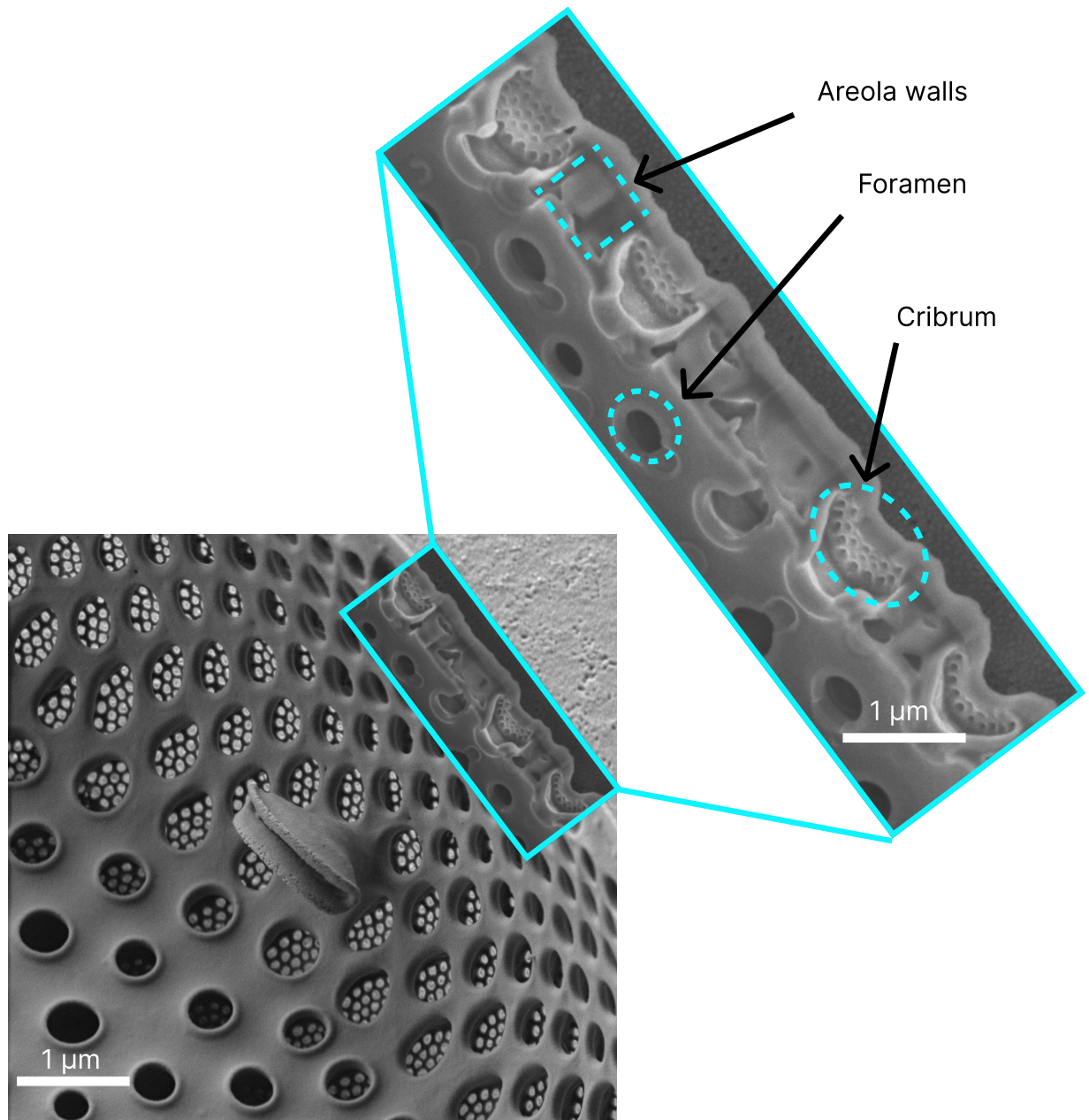


Figure S1. SEM images illustrating the multilayer organization of the diatom frustule and the corresponding cross-sectional view, highlighting the cribrum, foramen, and areola walls.

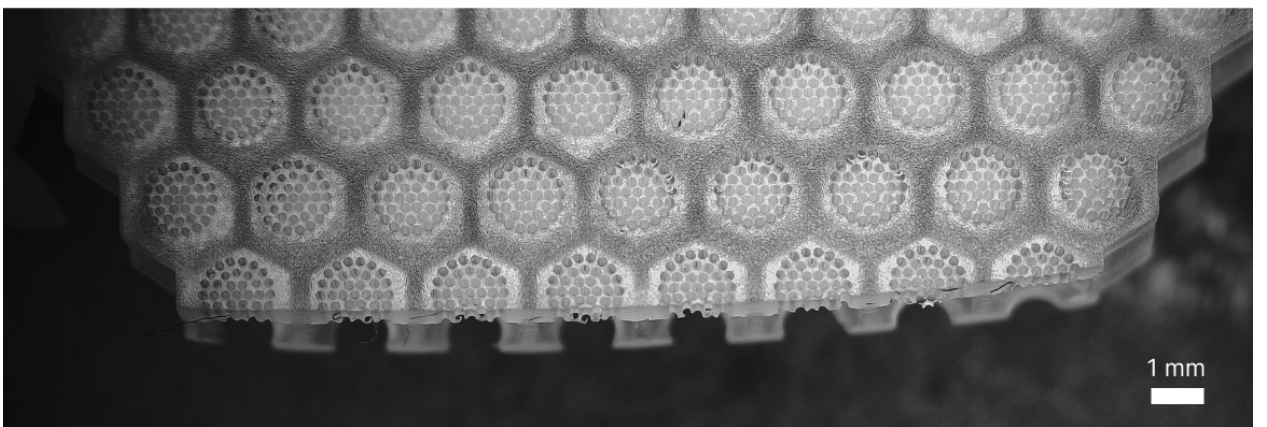
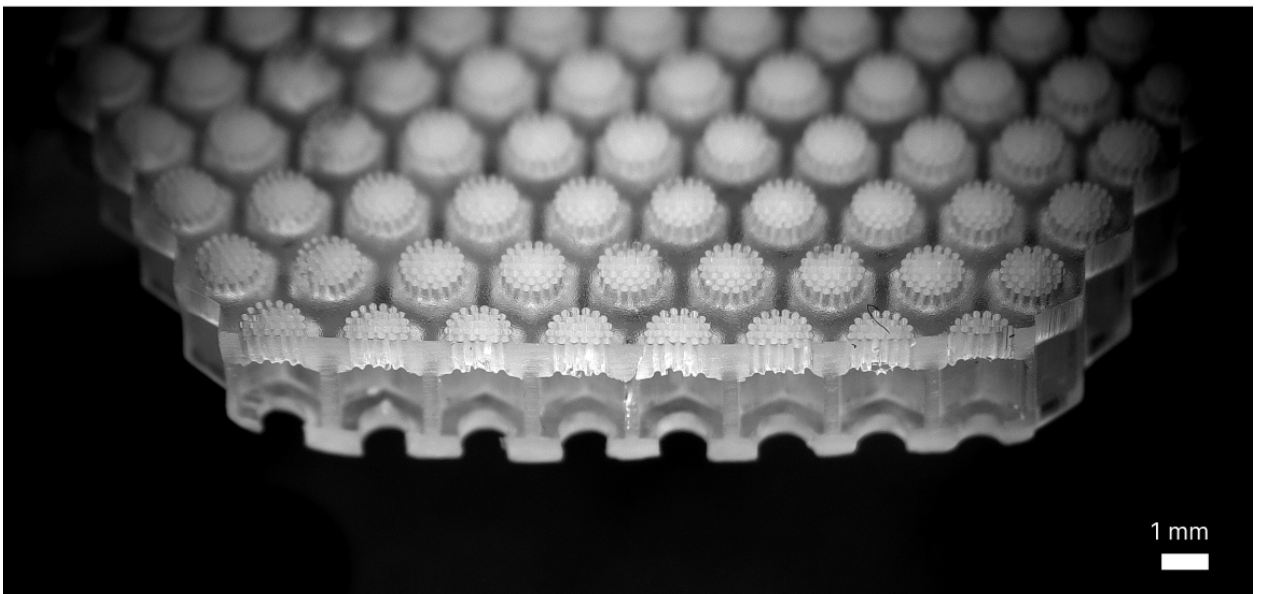
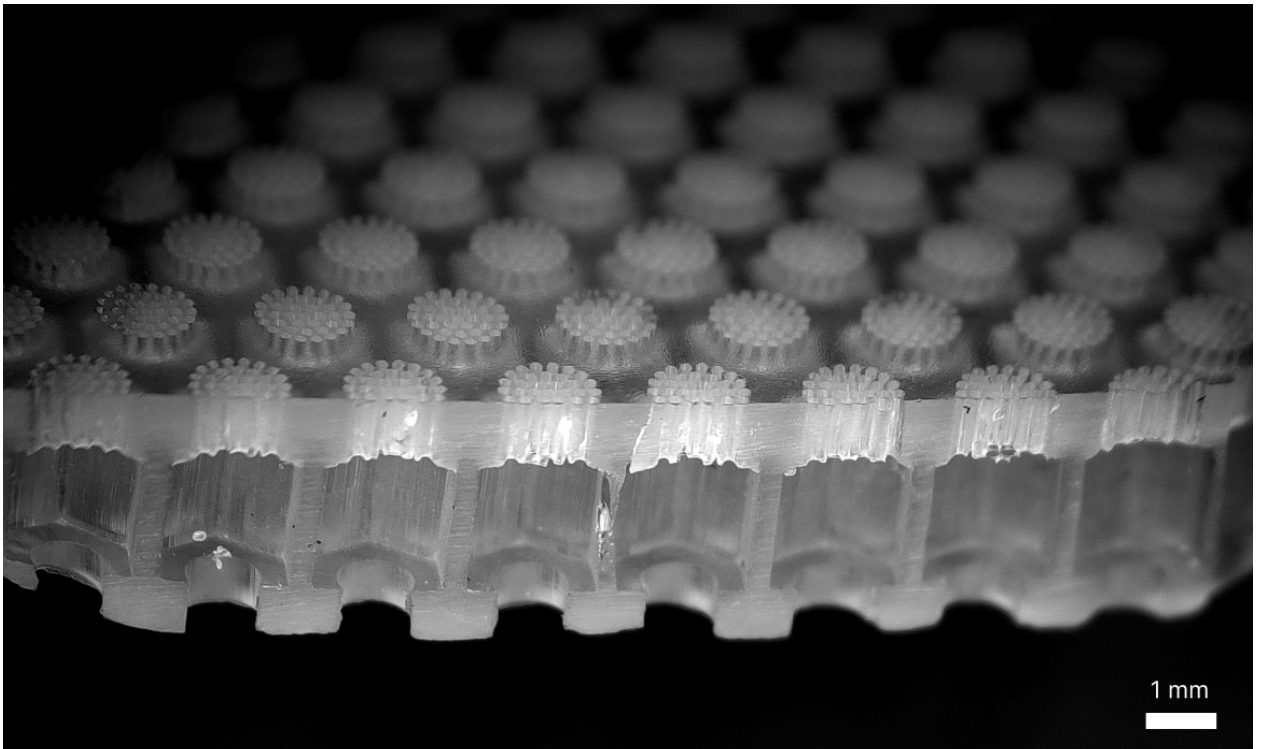


Figure S2. An enlarged view of the cribrum layer, showing the perforated plate geometry with an array of cylindrical pores.